



# TN5250J for WDSCi 7.0/RDP 8.0

## Plugin Versions

TN5250J 0.6.0.2

TN5250J – Core 1.3.0

TN5250J – RSE 2.2.0 (WDSCi 7.0)

TN5250J – RSE 2.2.0 (RDP 8.0)

## License

This program is free software; you can redistribute it and/or modify it under the terms of the GNU General Public License as published by the Free Software Foundation; either version 2, or (at your option) any later version. This program is distributed in the hope that it will be useful, but WITHOUT ANY WARRANTY; without even the implied warranty of MERCHANTABILITY or FITNESS FOR A PARTICULAR PURPOSE. See the GNU General Public License for more details. You should have received a copy of the GNU General Public License along with this software; see the file COPYING. If not, write to the Free Software Foundation, Inc., 59 Temple Place, Suite 330, Boston, MA 02111-1307 USA

## Overview

With TN5250J for WDSCi 7.0/RDP 8.0 you can run a 5250 Emulation in an own view/editor (TN5250J Sessions) within WDSCi 7.0/RDP 8.0. You must no longer leave the IDE, if you need a 5250 session. (See section "Create a session")

You can start SDA/RLU in an own view/editor (TN5250J Designer) within WDSCi 7.0/RDP 8.0 for a source physical file member with type DSPF, MNUDDS or PRTF in view "Remote Systems" just by selecting the specific menu item. In order to use this feature the system value **QRMTSIGN** has to be set to **\*VERIFY**. (See section "Create a designer session")

With an user defined option in PDM "Work with member - WRKMBRPDM" you can start the LPEX-Editor, Screen Designer or Report Designer. (See section "Start LPEX-Editor, Screen Designer or Report Designer from within PDM")



## Changes

- It is now possible to specify either to start a TN5250J session in a eclipse view or a eclipse editor.
- When trying to close a session while the session is signed on a window appears to confirm the close operation.
- When starting the LPEX-Editor, the Screen Designer or the Report Designer from within PDM the library list of the specific subsystem of the Remote Systems Explorer will be automatically set to the library list currently set in the TN5250J session.

In order to work with the last feature of the list it is necessary to eventually delete the old TN5250J library from the server and to transfer the new TN5250J library to the server.

### **TIP**

When pressing F1 or SHIFT-F1 (means F13) in a TN5250J session the eclipse help view will automatically be opened. You can prevent this, if you assign in the TN5250J keyboard settings the F1 function to ALT-F1 and the F13 function to ALT-SHIFT-F1.



# Instructions for Development

Download the Zip file "TN5250J for WDSCi 7.0-RDP 8.0 - Source" from <http://www.taskforce-it.de/downloads.php>

Unzip the file.

Import the projects in your eclipse workspace.

Note : This step is only for Eclipse Plugin Developers, who want to customize TN5250J.



# Instructions for WDSCi 7.0

## Download the update site needed for installation

Download the Zip file "TN5250J for WDSCi 7.0 - Update Site" from <http://www.taskforce-it.de/downloads.php>

Unzip the file.

## Install TN5250J for WDSCi 7.0 (Client Part)

Start WDSCi 7.0. (On Windows Vista or Windows 7 WDSCi has to be started with "Run as administrator").

Select menu item „Help/Software Updates/Find and Install“.

Select „Search for new features to install“ and click „Next“.

Click „New Locale Site“.

Select the downloaded folder „TN5250J for WDSCi 7.0 - Update Site “ in the target directory.

Click „OK“.

In window „Update sites to visit“ select the TN5250J update site. Deselect all other selected update sites.

Click „Finish“.

In window „Search results“ expand all positions.

Select all plugins inclusive the Albireo plugin.

Click „Next“.

Click „I accept the terms in the license agreement“.

Click „Next“.

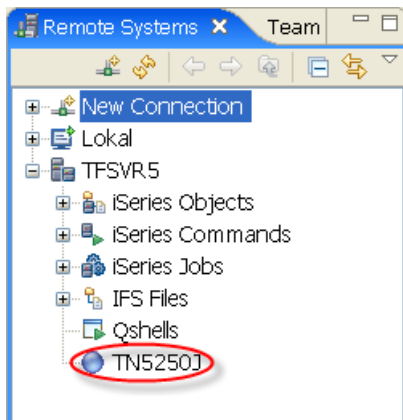
If you have installed additional third party Plug-Ins in WDSCi 7.0 - for example Instantiations "Windows Builder Pro" -, then it can occur, that in window "Installation" in field "Install Location" an other directory appears, than the one you have defined to install WDSCi 7.0 - for example C:/Programs/IBM/SDPxxx -. If so, then click "Change Location", select the directory where you have installed WDSCi 7.0 and click "OK".

Click „Finish“.

The window „Feature Verification“ with the message „You are about to install an unsigned feature“ appears. Ignore the message and click „Install All“

The window „Install/Update“ with the message „You will need to restart ...“ appears. Click „Yes“.

After restart in view “Remote Systems” the subsystem “TN5250J” appears as following.



### **Uninstall TN5250J for WDSCi 7.0 (Client Part)**

Start WDSCi 7.0. (On Windows Vista or Windows 7 WDSCi has to be started with “Run as administrator”).

Select menu item „Help/Software Updates/Manage Configuration“.

Expand the tree on the left side.

Right-click all entries “TN5250J” and select “Uninstall”

The window „Uninstall“ with the message „Do you want to ...“ appears. Click „OK“.

The window „Install/Update“ with the message „You will need to restart ...“ appears. Click „Yes“.

After restart the window “Problems” can appear with the message “Could not restore workbench layout”. You can ignore the message. Click OK. For future starts of the IDE, the message will not occur again.



# Instructions for RDP 8.0

## Download the update site needed for installation

Download the Zip file "TN5250J for RDP 8.0 - Update Site" from <http://www.taskforce-it.de/downloads.php>

Unzip the file.

## Install TN5250J for RDP 8.0 (Client Part)

Start RDP 8.0. (On Windows Vista or Windows 7 RDP has to be started with "Run as administrator").

Select menu item „Help/Install New Software“. The window "Available Software" appears.

Click „Add “. The window "Add Repository" appears.

Click "Local". The window "File Chooser" appears.

Select the downloaded folder „TN5250J for RDP 8.0 - Update Site “ in the target directory.

Click „OK“. The TN5250J update site appears in window "Available Software".

Select the TN5250J update site. Deselect all other selected update sites.

Click "Next". The window "Install Details" appears.

Click "Next". The windows "Review Licenses" appears.

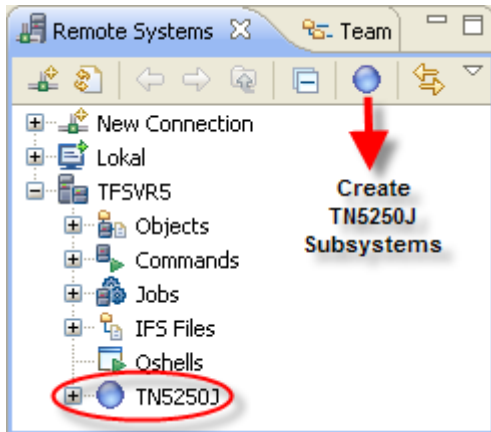
Click "I accept the terms of license agreements".

Click „Finish“. The window "Installing Software" appears. Don` t cancel the process.

The window "Security Warning" appears. Click "OK".

The window „Software Updates" with the message „You will need to restart ..." appears. Click „Restart Now".

After restart in view "Remote Systems" the subsystem "TN5250J" appears as following.



If the subsystem TN5250J doesn't appear under the existing IBM i connections do the following.

Click the button "Create TN5250J Subsystems"

### **Uninstall TN5250J for RDP 8.0 (Client Part)**

Start RDP 8.0. (On Windows Vista or Windows 7 RDP has to be started with "Run as administrator").

Select menu item „Help/Install New Software“.

Click "What is already installed".

Tick all entries "TN5250J" and click "Uninstall". The window "Uninstall Details" appears.

Click "Finish".

The window „Software Updates“ with the message „You will need to restart ...“ appears. Click „Restart Now“.

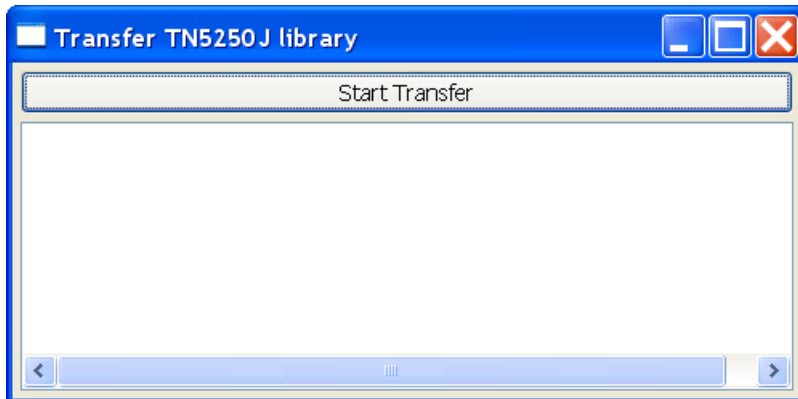
After restart the window "Problems" can appear with the message "Could not restore workbench layout". You can ignore the message. Click OK. For future starts of the IDE, the message will not occur again.

# Instructions for WDSCi 7.0/ RDP 8.0

## Install TN5250J (Server Part)

Right-click the subsystem "TN5250J" and select "Transfer TN5250J library".

The following window appears.



Click "Start Transfer". The library TN5250J will be transferred to the host.

Close the window.

## Uninstall TN5250J (Server Part)

Delete manually library TN5250J on the server. That`s all.

# Manual

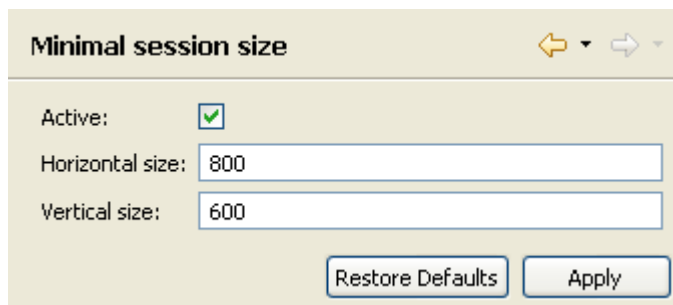
## Minimal session size

Select menu item "Window/Preferences".

In the tree on the left side expand the entry "TN5250J".

Select "Minimal session size"

You see this.



Here you can specify a minimal size for a session. If the size of the session falls below the specified minimal size a scrollbar appears and you can scroll within the session by scrollbar or by keyboard. Press "Ctrl-Alt-Arrow Up" to scroll up. Press "Ctrl-Alt-Arrow Down" to scroll down. Press "Ctrl-Alt-Arrow Left" to scroll left. Press "Ctrl-Alt-Arrow Right" to scroll right.

Enter the values for a minimal session size and click "Apply".

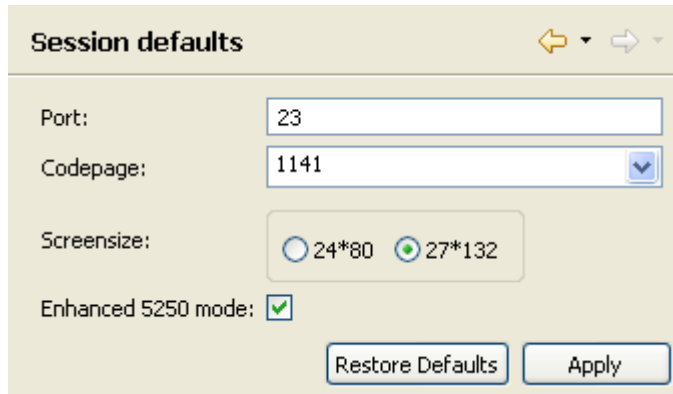
## Define session defaults

Select menu item "Window/Preferences".

In the tree on the left side expand the entry "TN5250J".

Select "Session defaults"

You see this.



The "Session defaults" dialog box is shown with the following settings:

- Port: 23
- Codepage: 1141
- Screensize: 27\*132 (selected)
- Enhanced 5250 mode:

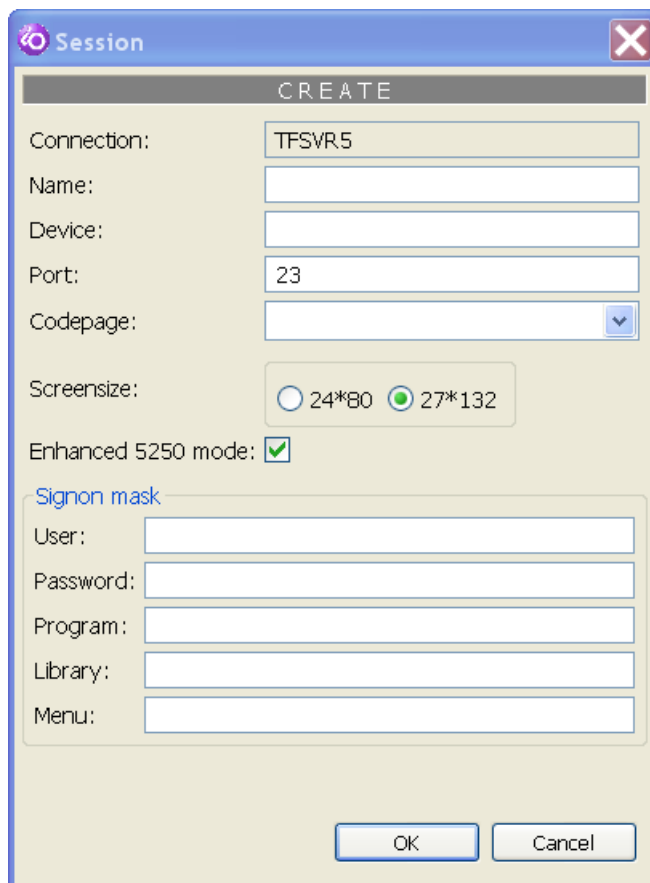
Buttons: Restore Defaults, Apply

Enter the default values for the sessions and click "Apply".

### Create a session

Right-click the subsystem "TN5250J" and select "New session".

The following window appears.



The "Session CREATE" dialog box is shown with the following settings:

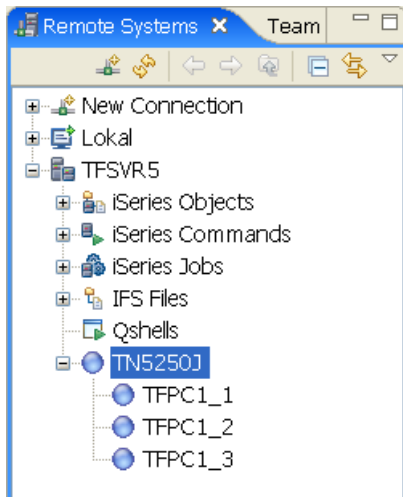
- Connection: TFSVR5
- Name: (empty)
- Device: (empty)
- Port: 23
- Codepage: (empty)
- Screensize: 27\*132 (selected)
- Enhanced 5250 mode:
- Signon mask:
  - User: (empty)
  - Password: (empty)
  - Program: (empty)
  - Library: (empty)
  - Menu: (empty)

Buttons: OK, Cancel

Fill out the fields and click "OK".

Repeat this step, if you want to create more sessions for the connection.

After creating the sessions the view "Remote Systems" looks like this.

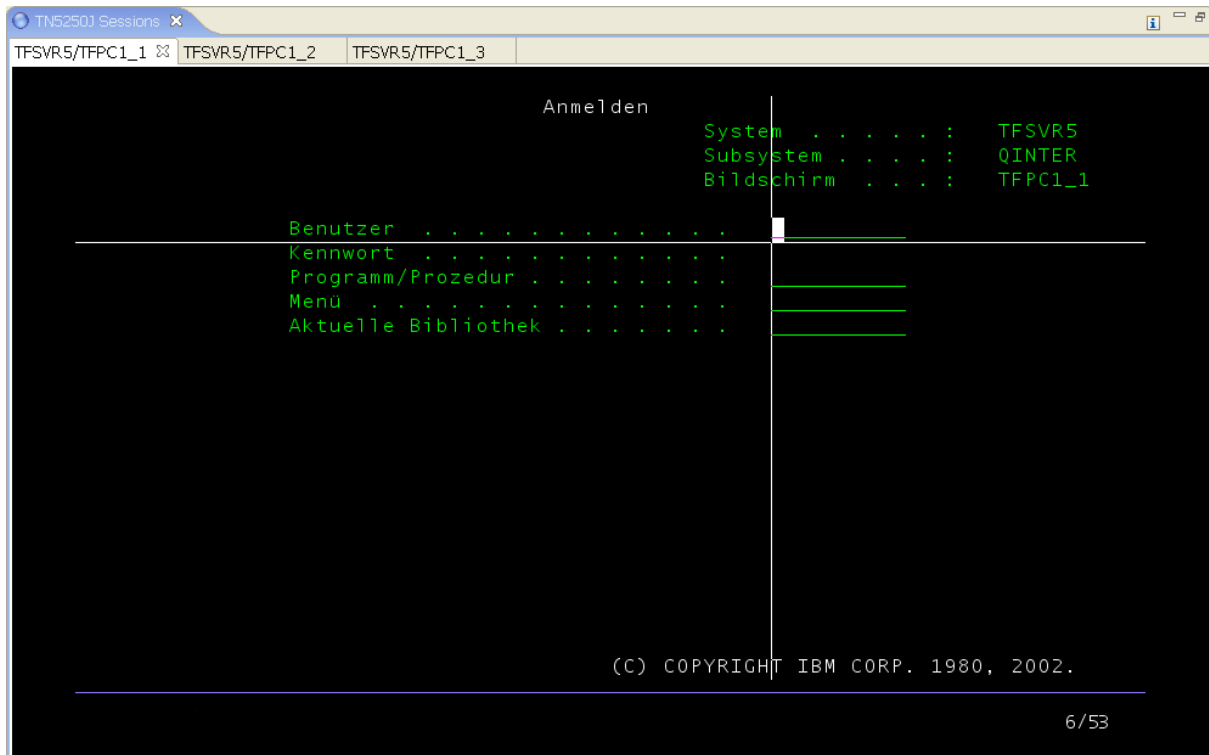


To change, delete or display the session parameters right-click the session and select the specific menu item.


### Start a session

To start a session double-click the session.

The view/editor "TN5250J Sessions" appears as following.




Every session appears in its own tab item. To toggle between the sessions click the specific tab item or press "Ctrl-Arrow Up" to select the next session or press "Ctrl-Arrow Down" to select the previous session.

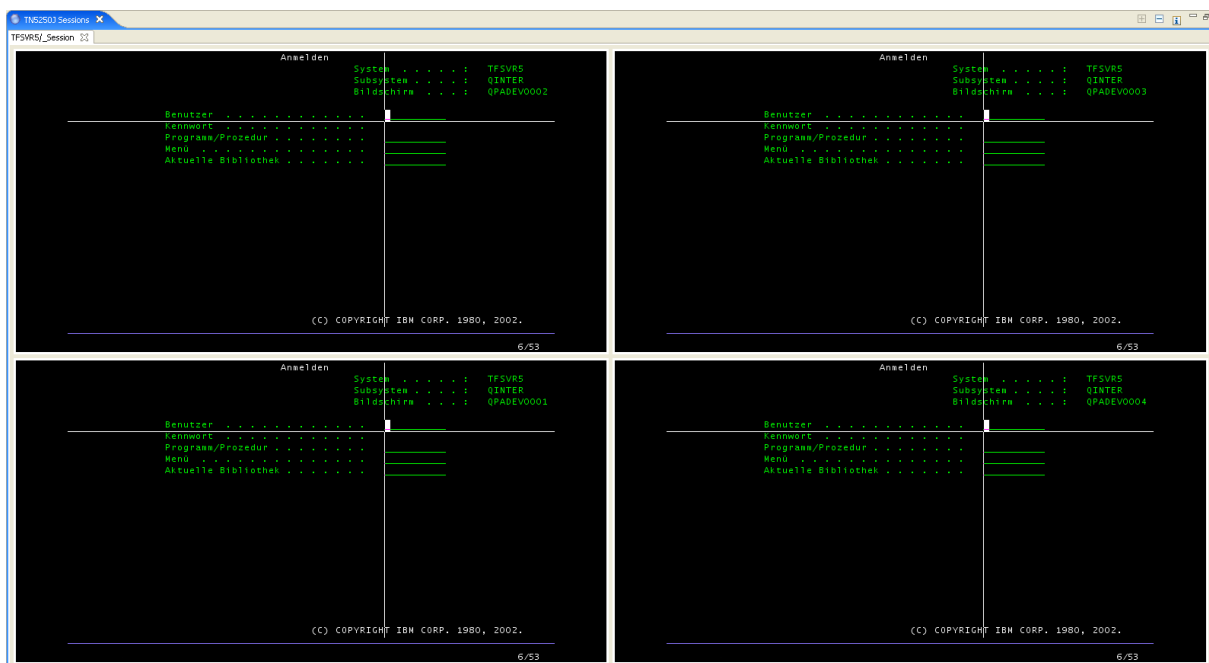
To close a session click on the close icon on the tab item .

## Start a multi session

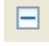
At first start a session as described in section "Start a session". The device in the session definition of the selected session has to be blank. If you have specified a device, then you can not start a multi session for such a session definition.

To start a multi session click on icon  in the tool bar of view/editor "TN5250J Sessions". Click the icon again, to start another multi session. You can start up to four multi sessions.

The view/editor "TN5250J Sessions" could appear like this.



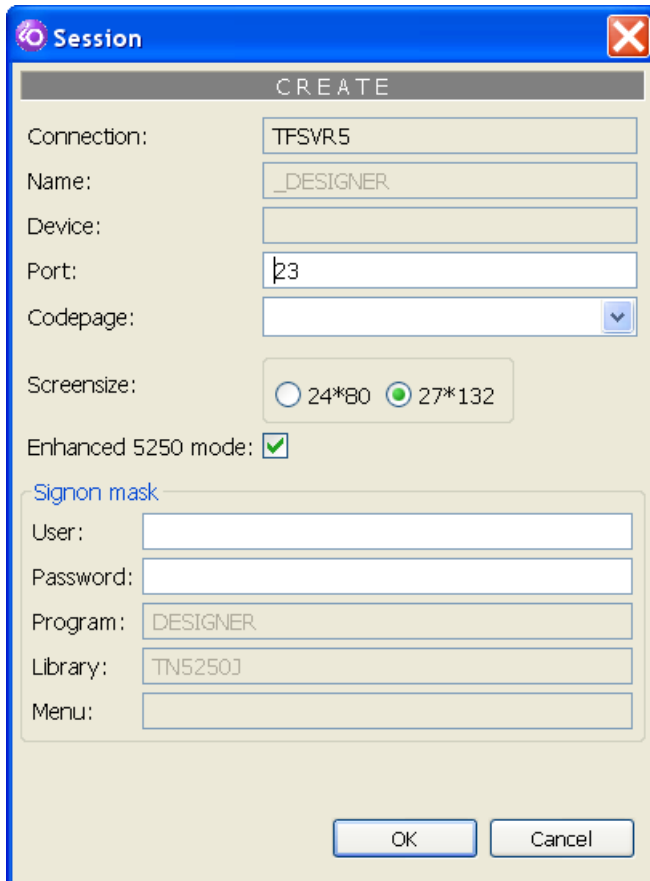
To toggle between the multi sessions click the specific multi session or press "Alt-Arrow Up" to select the next multi session or press "Alt-Arrow Down" to select the previous multi session.

To close a multi session click on icon  in the tool bar of view/editor "TN5250J Sessions". The multi session with the current focus will be closed.

## Create a designer session

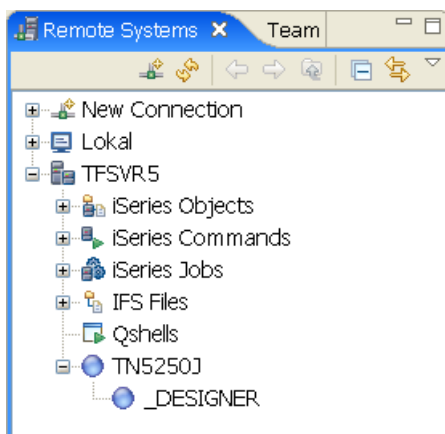
Right-click the subsystem "TN5250J" and select "New designer session".

The following window appears.



Fill out the fields and click "OK". In comparison to a normal session a designer session requires user and password. The password will be stored encrypted. Although you can start several designer sessions you have to define just one designer session.

After creating the designer session the view "Remote Systems" looks like this.

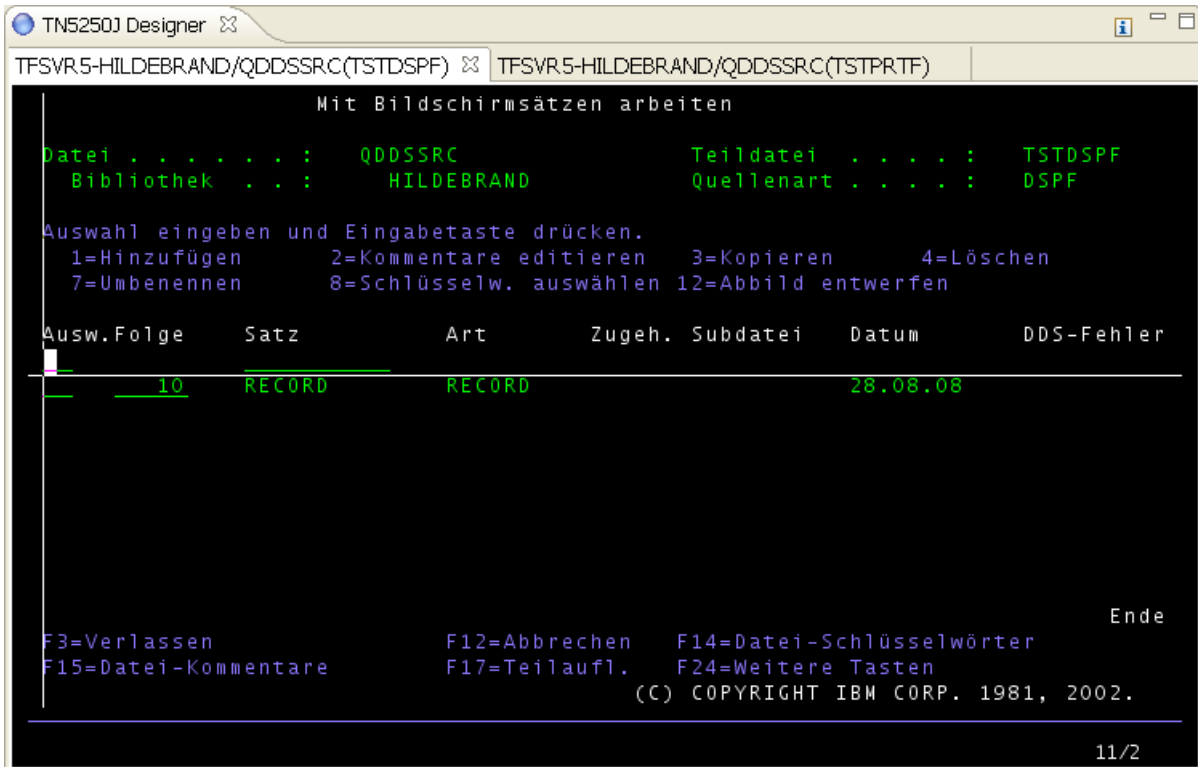


To change, delete or display the designer session parameters right-click the designer session and select the specific menu item.

## Start a designer session

To start a designer session right-click in view "Remote Systems" a source physical file member with type DSPF, MNUDDS or PRTF and select menu item "TN5250J Designer" in menu group "Open with" or "Browse with".

The view/editor "TN5250J Designer" appears as following.



The screenshot shows the TN5250J Designer window with two tabs: 'TFSVR.5-HILDEBRAND/QDDSSRC(TSTDSPF)' and 'TFSVR.5-HILDEBRAND/QDDSSRC(TSTPRTF)'. The main area displays a terminal window with the following content:

```

Mit Bildschirmsätzen arbeiten

Datei . . . . . : QDDSSRC           Teildatei . . . . . : TSTDSPF
Bibliothek . . . : HILDEBRAND       Quellenart . . . . . : DSPF


Auswahl eingeben und Eingabetaste drücken.
1=Hinzufügen      2=Kommentare editieren  3=Kopieren      4=Löschen
7=Umbenennen     8=Schlüsselw. auswählen 12=Abbild entwerfen

Ausw.Folge   Satz           Art           Zugeh. Subdatei   Datum           DDS-Fehler
-----
  10         RECORD       RECORD                28.08.08

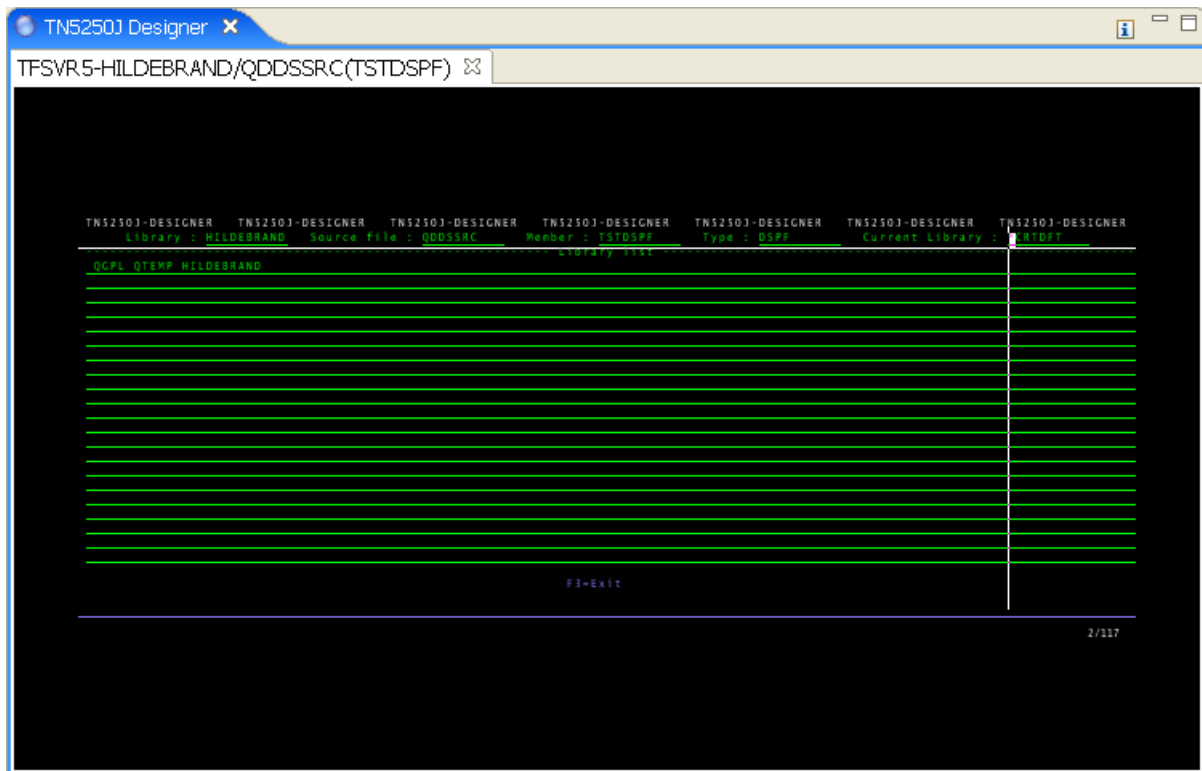
F3=Verlassen      F12=Abbrechen   F14=Datei-Schlüsselwörter
F15=Datei-Kommentare  F17=Teilaufl.   F24=Weitere Tasten
(C) COPYRIGHT IBM CORP. 1981, 2002.
  
```

The table shows one record with 'Ausw.Folge' 10, 'Satz' RECORD, 'Art' RECORD, 'Datum' 28.08.08, and 'DDS-Fehler' empty. The interface includes a cursor on the first column and various function key instructions at the bottom.

Every designer session appears in its own tab item. To toggle between the designer sessions click the specific tab item or press "Ctrl-Arrow-Up" to select the next designer session or press "Ctrl-Arrow-Down" to select the previous designer session.

To close a designer session click on the close icon on the tab item .

After designing you can leave SDA/RLU to proceed as normal. The following screen appears.



If you press "Enter" SDA/RLU will be started again. If you press "F3" the session will be closed and the tab item disappears.

If you start the designer in browse mode, then the original source will be copied to library QTEMP in file QTN5250J. After this SDA/RLU will be started with library QTEMP and source file QTN5250J. If you make now changes with SDA/RLU, then these changes have no effect to the original source.

### **Start LPEX-Editor, Screen Designer or Report Designer from within PDM**

Start PDM by entering command STRPDM.

Select menu item "9 = Work with user defined options".

Select the file for your user defined options and press enter.

Press F6 to create a new user defined option.

In field "User defined option" enter a value. For example "XY".

In field "Command" enter

```
CALL PGM(TN5250J/EDITOR) PARM('&L' '&F' '&N' '*OPEN')
```

for open LPEX-Editor, Screen Designer or Report Designer in modify mode.



In field "Command" enter  
CALL PGM(TN5250J/EDITOR) PARM('&L' '&F' '&N' '\*BROWSE')  
for open LPEX-Editor, Screen Designer or Report Designer in browse mode.

Press enter to store the user defined option.

Start the programm "Work with members – WRKMBRPDM".

Next to a physical file member enter your user defined option.

The LPEX-Editor, Screen Designer or Report Designer will be started.


### **Activate/Deactivate eclipse key bindings**

When a TN5250J session has focus, then eclipse key bindings are deactivated. This is necessary, because the key strokes have to be send to the 5250 emulation. Now by pressing Ctrl+F12 in a TN5250J session you can activate/deactivate eclipse key bindings. For example if you want to change the perspective you can now press Ctrl+F12 to activate eclipse key bindings. Then press Ctrl+F8 for changing the perspective.

### **TIP**

When pressing F1 or SHIFT-F1 (means F13) in a TN5250J session the eclipse help view will automatically be opened. You can prevent this, if you assign in the TN5250J keyboard settings the F1 function to ALT-F1 and the F13 function to ALT-SHIFT-F1.

### **Miscellaneous**

To get additional informations about the developers click on the info icon .

To get general informations about the TN5250J emulator visit the site <http://tn5250j.sourceforge.net/>

And now enjoy.